



混凝土搅拌运输车
CONCRETE TRUCK MIXER



Web: machmall.com

Tel: +86-516 8773 9797

E: machmall@xcmg.com



德国技术

GERMAN TECHNOLOGY

专业、极致，源自德国施维英的顶级技术

Specialty and acme originates from the top-level technology of SCHWING Germany

中国制造

MADE IN CHINA

落地德国制造高标准，实现产品的高可靠、超耐用

By implementing the high standard of German-made realizes highly reliable and durable products.

卓越品质

EXCELLENT QUALITY

用心设计，细节彰显尊重，品质赢得未来

Carefully designed, details demonstrates respect and quality wins the future.



技术全面升级

COMPREHENSIVELY UPGRADED TECHNOLOGY

V7系列混凝土搅拌运输车

XCMG V7-SERIES CONCRETE TRUCK MIXER

高效搅拌技术

Efficient mixing technology

大容量、低倾角罐容技术

Tank technology of large capacity and low angle

关键件可靠性全面提升

Comprehensive improvement of key parts' reliability

先进施维英制造工艺应用

Application of SCHWING's advanced manufacturing technology

最佳底盘方案匹配

Optimal matching of chassis scheme

更多便利细节应用

Adoption of more convenient details

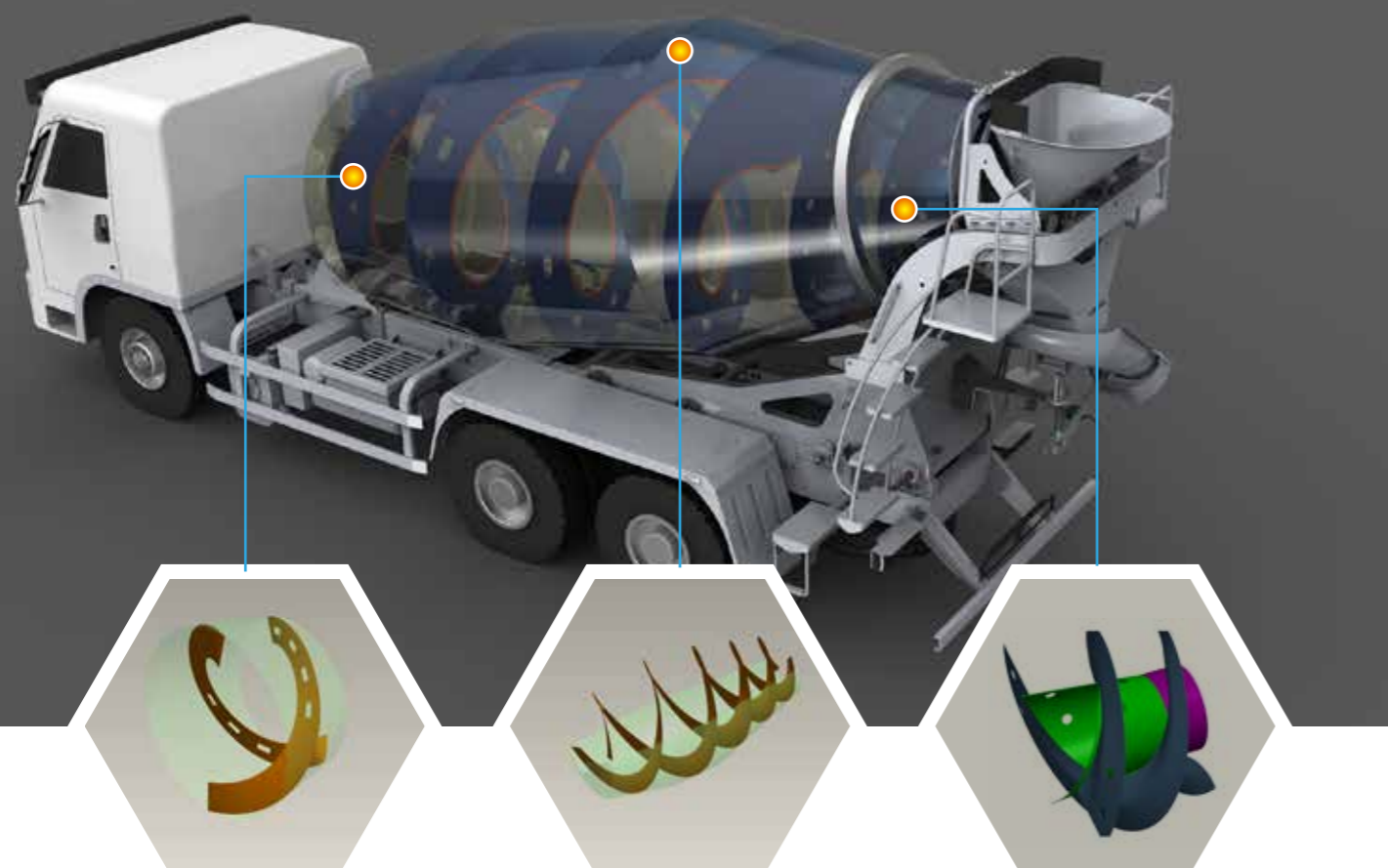
全新工业外观造型

New industrial exterior styling



DURABLE

ADVANCED



NO.1

EFFICIENT MIXING TECHNOLOGY 高效搅拌技术

- 前锥采用大升角设计，搅拌能力更强，搅拌更均匀，实现混凝土各阶段的塌落度变化范围 $\leq 5\%$ ；
- Large rise angle is designed at front cone to provide stronger mixing capacity and more uniform mixing, with a concrete slump change at all stages of $\leq 5\%$;
- 过渡叶片采用独有的连续迹线设计，保证搅拌筒轴向无死角，残余率更低，可降至0.4%以下；
- Unique continuous trace design is used for transitional blade to ensure that mixing drum has no axial dead angle, with a lower residual rate of below 0.4%;
- 后锥采用施维英大折弯角弧形叶片设计，混凝土流动性更好，进出料速度提升10%。
- SCHWING's large-bend arc-shaped blade design is used at rear cone to provide better concrete fluidity, with charging and discharging speed increased by 10%.

NO.2

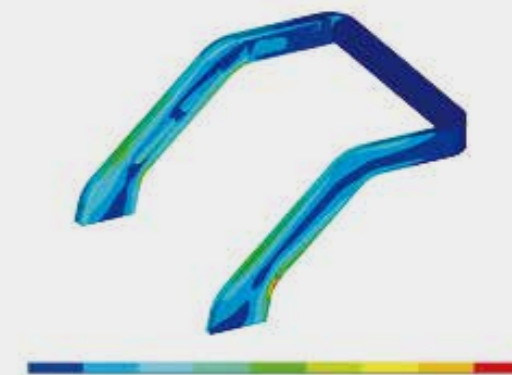
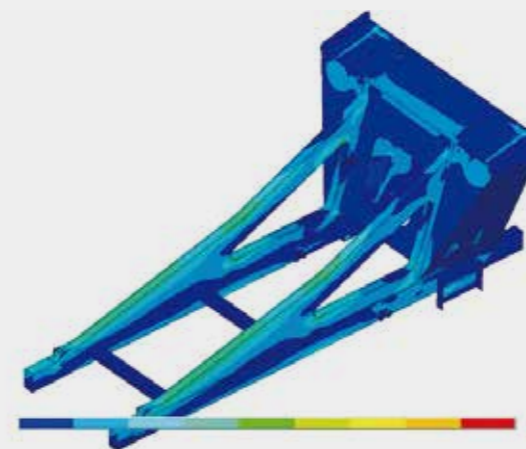
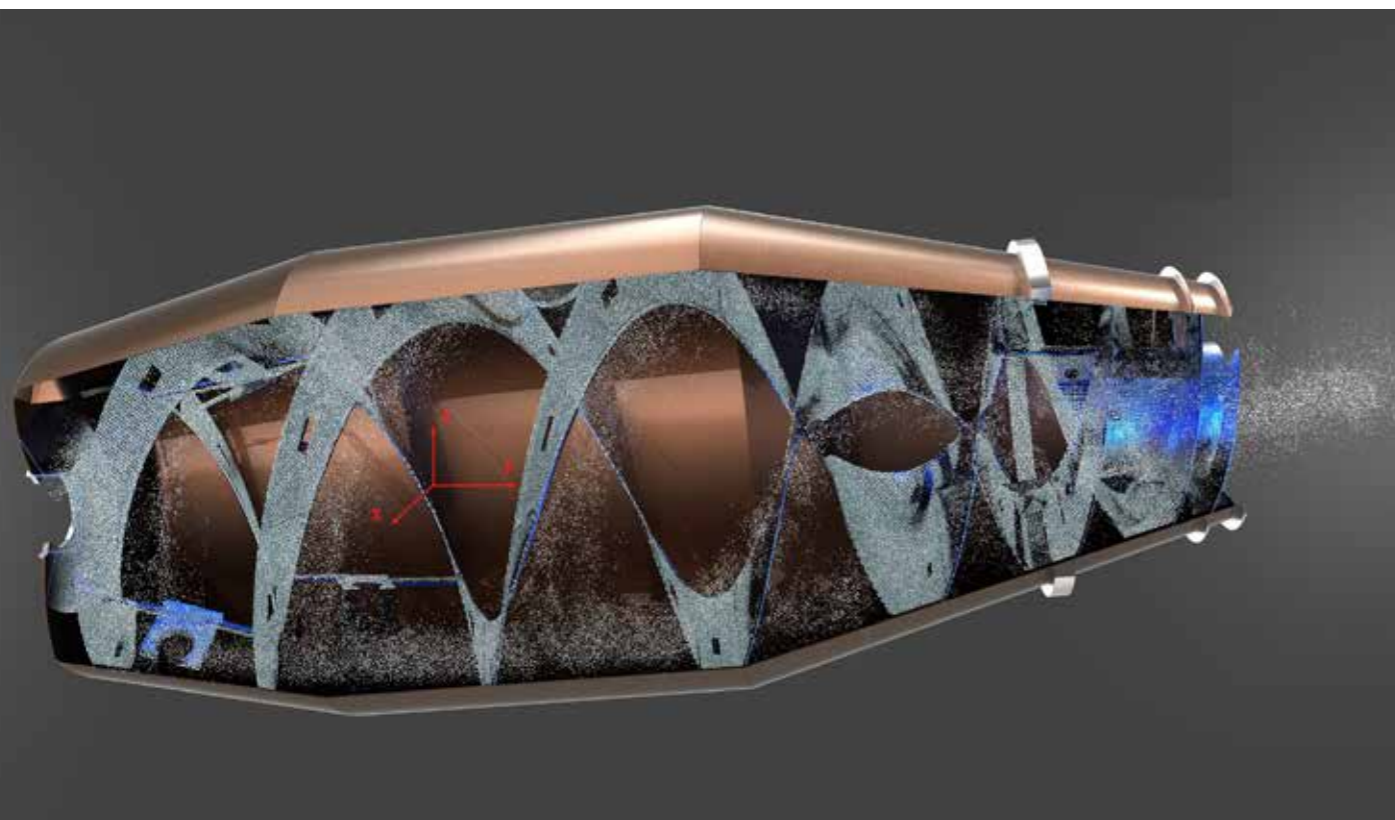
TANK TECHNOLOGY OF LARGE CAPACITY AND LOW ANGLE 大容量、低倾角罐容技术

- 搅拌筒采用施维英变叶片高度设计，配合优化的导料管，封料能力更强，填充率更高，罐体装载能力提升6%；
- SCHWING's blade design of variable height is used for mixing drum, together with optimized guide pipe, to provide stronger material sealing capacity and higher filling rate, thus improving the loading capacity of the tank by 6%;



- 搅拌筒低倾角设计，相同装载容积倾角较同行低5%、稳定性提升18%。
- Low dip angle is designed, with the angle 5% lower than that of its counterparts and the stability improved by 18% under equivalent loading capacity.





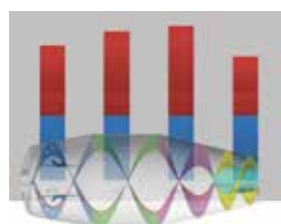
NO.3

COMPREHENSIVE IMPROVEMENT OF KEY PARTS' RELIABILITY

关键件可靠性全面提升

- 罐体、叶片板材优化匹配，实现搅拌系统等寿命设计；
- Optimized matching of drum body and blade steel plate realizes equivalent service life of mixing system;
- 进料斗、溜槽采用多层高强耐磨衬板，使用寿命提高50%；
- Feed hopper and chute are made of multilayer high-strength wear-resistant liner plate, with the service life increased by 50%.

- 后支座采用两折弯弧形后围梁与三角形斜拉梁组合设计，超强承载，可靠耐用，疲劳寿命提高30%；
- The combined design of two bent arc-shaped rear beams and triangle stayed beam structure is used for rear support to provide super-strong bearing capacity, with fatigue life increased by 30%, sturdy and durable;
- 知名品牌液压件匹配、长寿命传动轴应用，系统可靠性提升1倍。
- The adoption of hydraulic parts of famous brands and transmission shaft of long service life improves the system's reliability by once.



NO.4

APPLICATION OF SCHWING'S ADVANCED MANUFACTURING TECHNOLOGY

先进施维英制造工艺应用

- 搅拌筒采用专用的下料、卷圆、组对设备，形位精度更高，搅拌筒性能更优，整车稳定性更高；
- Special cutting, rolling and assembly equipments are used for the manufacturing of mixing drum to provide higher accuracy in form and position, better drum performance and higher overall stability.
- 螺旋叶片采用国内首创的冷冲压回弹补偿技术，叶片成型精度更高，质量更可靠。
- Domestically initiative cold pressing spring-back compensation technology is used for spiral blade to provide higher blade molding accuracy and more reliable quality.
- 结构件采用二抛+二底+二面涂装工艺，使用更长久。
- Structural parts adopt the painting technology of twice ball blasting + twice priming paint + twice finish paint, more durable.



- 采用行业一流的搅拌筒机器人自动化焊接技术，固化最优的施维英工艺参数，筒体焊缝更可靠，抗疲劳能力更强。

- Industry-leading robotized welding technology is used for mixing drum and SCHWING's optimal technological parameters are fixed to provide more reliable weld seam and stronger fatigue resistance.

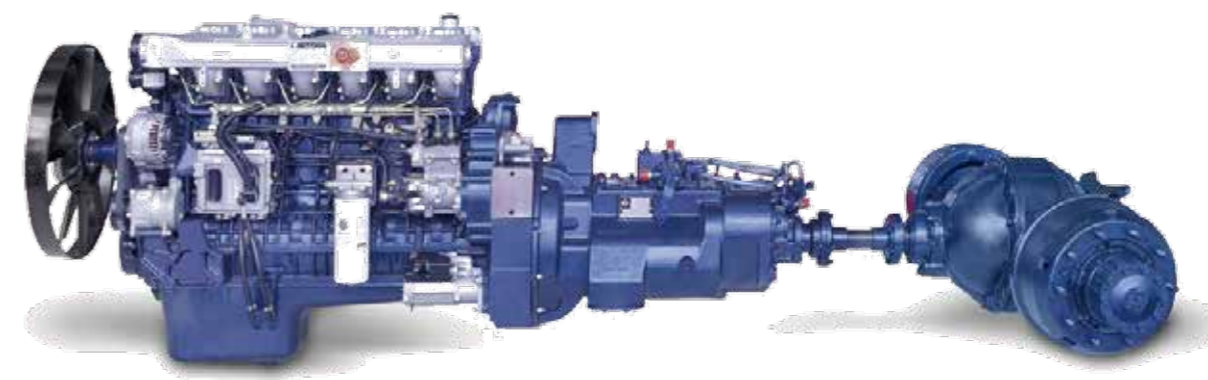


NO.5

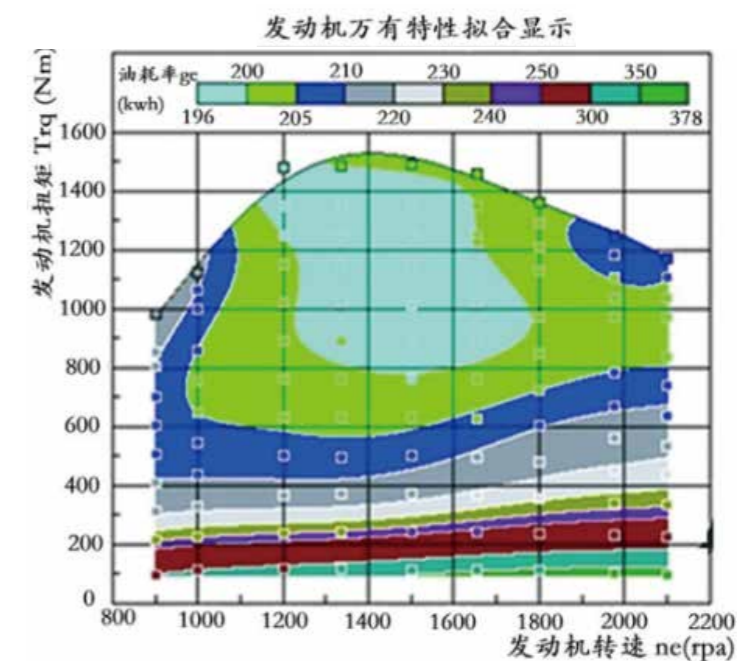
OPTIMAL MATCHING OF CHASSIS SCHEME

最佳底盘方案匹配

- 配置经典黄金动力链，产品更耐用，维修更方便，成本更低廉；
- The adoption of classical golden power transmission chain provides more durable products, more convenient maintenance and lower cost.



- 采用行业领先的双功率控制技术，针对搅拌筒负载，进行实时控制和调节，有效降低产品油耗。
- The industry-leading dual power control technology is adopted to carry out the real-time control and adjustment for different drum load, effectively reducing fuel consumption of products.



NO.6

ADOPTION OF MORE CONVENIENT DETAILS 更多便利细节应用



- 水路系统集成控制、一进多出，方便快捷；
- Integrated control is used for water supply system, with one-inlet and multiple-outlet applied, convenient and fast;



- 操纵系统前后联动、双限位设计，操作便捷、可靠，阻尼合理优选，全面提升客户手感体验；

- Front and rear linkage and double-limit structure are designed for the control system to provide more convenient and reliable manipulation, and with proper damp chosen, to comprehensively improve customer's hand feeling experience.



- X-link物联网智能管理系统应用，全面掌握车辆运营状况（选）；
- The application of intelligent management system of X-link telematics can comprehensively master the vehicle's operating conditions (optional);



- 全视角盲区监控，进出料协同作业，精准高效（选）。
- With full-view monitoring of blind zones, the cooperative operation of feeding and unloading is accurate and efficient (optional).

NO.7

NEW INDUSTRIAL EXTERIOR STYLING 全新工业外观造型

- 全新涂装方案应用，图案新颖美观，体现中德技术的新的融合提升，带来不一样的视觉冲击感受。
- The application of a new painting scheme with novel and beautiful patterns embodies the new incorporation and upgrade of XCMG and SCHWING's technologies, bringing you a different visual impact.
- 整车造型美观，线条流畅，完美的流线成型斗体，人性化踏梯，全钢走台，更多精细化设计，带给客户全新体验。
- Overall machine features attractive appearance, smooth streamline, perfect streamlined hopper, user-friendly step ladder, and full-steel catwalk, giving more attractive design to provide you a new experience.



技术参数 Table of technical parameters



重汽系列 SINOTRUK SERIES

类别 CATEGORY	项目	ITEM	单位 UNIT	XSC3307	XSC3309	XSC3311
搅拌筒性能 Performance of mixing drum	转动速度	Rev.	r/min	0~14	0~14	0~14
	进料速度	Charging speed	m³/min	≥3	≥3	≥3
	出料速度	Discharging speed	m³/min	≥2	≥2	≥2
	出料残余率	Residual ratio of discharging	%	<0.4%	<0.4%	<0.4%
液压系统 Hydraulic system	油泵	Oil pump		国际名牌 World-famous brand		
	马达	Motor		国际名牌 World-famous brand		
	减速机	Speed reducer		国际名牌 World-famous brand		
供水 Water supply	水箱容积	Volume of water tank	L	450	450	450
整车 Overall vehicle	底盘型号	Chassis model		ZZ1257N3647E1	ZZ1257N4347E1	ZZ1257N4347E1
	整备质量	Curb mass	Kg'	14600	15870	16170
	驱动形式	Drive type		6×4	6×4	6×4
	轴距	Wheel base	mm	3825+1350	4025+1350	4325+1350
	轮胎	Tire		12.00R20	12.00R20	12.00R20
	取力方式	PTO way		飞轮取力Flywheel		
	外形尺寸	Outline dimensions	(长×宽×高)mm	9405×2500×3980	9850×2500×3980	10470×2500×3995
发动机 Engine	型号	Model		D10.34-50	D10.34-50	D10.34-50
	额定功率	Rated power	kW	249	249	249
	燃料类别	Fuel		柴油 Diesel	柴油 Diesel	柴油 Diesel
	排放标准	Emission standard		国V China V	国V China V	国V China V

类别 CATEGORY	项目	ITEM	单位 UNIT	XSC3303	XSC3305	XSC3307
搅拌筒性能 Performance of mixing drum	转动速度	Rev.	r/min	0~14	0~14	0~14
	进料速度	Charging speed	m³/min	≥3	≥3	≥3
	出料速度	Discharging speed	m³/min	≥2	≥2	≥2
	出料残余率	Residual ratio of discharging	%	<0.4%	<0.4%	<0.4%
液压系统 Hydraulic system	油泵	Oil pump		国际名牌 World-famous brand		
	马达	Motor		国际名牌 World-famous brand		
	减速机	Speed reducer		国际名牌 World-famous brand		
供水 Water supply	水箱容积	Volume of water tank	L	450	450	450
整车 Overall vehicle	底盘型号	Chassis model		ZZ1255N3243E1	ZZ1255N3243E1	ZZ1255N3243E1
	整备质量	Curb mass	Kg	11700	12600	12600
	驱动形式	Drive type		6×4	6×4	6×4
	轴距	Wheel base	mm	3225+1350	3225+1350	3225+1350
	轮胎	Tire		11.00R20	11.00R20	11.00R20
	取力方式	PTO way		飞轮取力Flywheel		
	外形尺寸	Outline dimensions	(长×宽×高)mm	8390×2500×3900	8700×2500×3965	8700×2500×3965
发动机 Engine	型号	Model		MC07.28-50	MC07.31-50	MC07.34-50
	额定功率	Rated power	kW	206	228	248
	燃料类别	Fuel		柴油 Diesel	柴油 Diesel	柴油 Diesel
	排放标准	Emission standard		国V China V	国V China V	国V China V

类别 CATEGORY	项目	ITEM	单位 UNIT	XSC4313	XSC4315
搅拌筒性能 Performance of mixing drum	转动速度	Rev.	r/min	0~14	0~14
	进料速度	Charging speed	m³/min	≥3	≥3
	出料速度	Discharging speed	m³/min	≥2	≥2
	出料残余率	Residual ratio of discharging	%	<0.4%	<0.4%
液压系统 Hydraulic system	油泵	Oil pump		国际名牌 World-famous brand	
	马达	Motor		国际名牌 World-famous brand	
	减速机	Speed reducer		国际名牌 World-famous brand	
供水 Water supply	水箱容积	Volume of water tank	L	450	450
整车 Overall vehicle	底盘型号	Chassis model		ZZ1317N3667E1	ZZ1317N3667E1
	整备质量	Curb mass	Kg	18870	19370
	驱动形式	Drive type		8×4	8×4
	轴距	Wheel base	mm	1800+3600+1350	1800+3825+1350
	轮胎	Tire		12.00R20	12.00R20
	取力方式	PTO way		飞轮取力Flywheel	
	外形尺寸	Outline dimensions	(长×宽×高)mm	11530×2500×4000	11975×2500×4000
发动机 Engine	型号	Model		D10.38-50	D10.38-50
	额定功率	Rated power	kW	276	276
	燃料类别	Fuel		柴油 Diesel	柴油 Diesel
	排放标准	Emission standard		国V China V	国V China V

类别 CATEGORY	项目	ITEM	单位 UNIT	XSC4305	XSC4307	XSC4309
搅拌筒性能 Performance of mixing drum	转动速度	Rev.	r/min	0~14	0~14	0~14
	进料速度	Charging speed	m³/min	≥3	≥3	≥3
	出料速度	Discharging speed	m³/min	≥2	≥2	≥2
	出料残余率	Residual ratio of discharging	%	<0.4%	<0.4%	<0.4%
液压系统 Hydraulic system	油泵	Oil pump		国际名牌 World-famous brand		
	马达	Motor		国际名牌 World-famous brand		
	减速机	Speed reducer		国际名牌 World-famous brand		
供水 Water supply	水箱容积	Volume of water tank	L	450	450	450
整车 Overall vehicle	底盘型号	Chassis model		ZZ1315N3063E1	ZZ1315N3063E1	ZZ1315N3063E1
	整备质量	Curb mass	Kg'	13400	14670	14670
	驱动形式	Drive type		8×4	8×4	8×4
	轴距	Wheel base	mm	1800+3050+1350	1800+3050+1350	1800+3050+1350
	轮胎	Tire		11.00R20	11.00R20	11.00R20
	取力方式	PTO way		飞轮取力Flywheel		
	外形尺寸	Outline dimensions	(长×宽×高)mm	10100×2500×3965	10215×2500×3965	10215×2500×3965
发动机 Engine	型号	Model		MC07.31-50	MC07.34-50	MC07.34-50
	额定功率	Rated power	kW	228	248	248
	燃料类别	Fuel		柴油 Diesel	柴油 Diesel	柴油 Diesel
	排放标准	Emission standard		国V China V	国V China V	国V China V

技术参数 Table of technical parameters



徐工汉风系列 XCMG HANVAN SERIES

类别 CATEGORY	项目	ITEM	单位 UNIT	XSC2301	XSC2303	XSC3309
搅拌筒性能 Performance of mixing drum	转动速度	Rev.	r/min	0~14	0~14	0~14
	进料速度	Charging speed	m³/min	≥3	≥3	≥3
	出料速度	Discharging speed	m³/min	≥2	≥2	≥2
	出料残余率	Residual ratio of discharging	%	<0.4%	<0.4%	<0.4%
液压系统 Hydraulic system	油泵	Oil pump		国际名牌 World-famous brand		
	马达	Motor		国际名牌 World-famous brand		
	减速机	Speed reducer		国际名牌 World-famous brand		
供水 Water supply	水箱容积	Volume of water tank	L	450	450	450
整车 Overall vehicle	底盘型号	Chassis model		NXG3181D5NAX	NXG3180D5NAX	NXG3251D5WCX
	整备质量	Curb mass	Kg'	8360	10000	15600
	驱动形式	Drive type		4×2	4×2	6×4
	轴距	Wheel base	mm	3800	4200	4000+1400
	轮胎	Tire		10.00R20	11.00R20	12.00R20
	取力方式	PTO way		飞轮取力Flywheel		
	外形尺寸	Outline dimensions	(长×宽×高)mm	7490×2550×3310	7970×2525×3660	9885×2500×4000
发动机 Engine	型号	Model		YC4EG140-50	YC6JA180-50	WP10.350E53
	额定功率	Rated power	kW	105	132	257
	燃料类别	Fuel		柴油 Diesel	柴油 Diesel	柴油 Diesel
	排放标准	Emission standard		国V China V	国V China V	国V China V

类别 CATEGORY	项目	ITEM	单位 UNIT	XSC4305	XSC4307	XSC4309
搅拌筒性能 Performance of mixing drum	转动速度	Rev.	r/min	0~14	0~14	0~14
	进料速度	Charging speed	m³/min	≥3	≥3	≥3
	出料速度	Discharging speed	m³/min	≥2	≥2	≥2
	出料残余率	Residual ratio of discharging	%	<0.4%	<0.4%	<0.4%
液压系统 Hydraulic system	油泵	Oil pump		国际名牌 World-famous brand		
	马达	Motor		国际名牌 World-famous brand		
	减速机	Speed reducer		国际名牌 World-famous brand		
供水 Water supply	水箱容积	Volume of water tank	L	450	450	450
整车 Overall vehicle	底盘型号	Chassis model		NXG3310D5NEMX	NXG3310D5NEMX	NXG3310D5NEMX
	整备质量	Curb mass	Kg	13000	15300	15300
	驱动形式	Drive type		8×4	8×4	8×4
	轴距	Wheel base	mm	1950+2900+1350	1950+2900+1350	1950+2900+1350
	轮胎	Tire		11.00R20	11.00R20	11.00R20
	取力方式	PTO way		飞轮取力Flywheel		
	外形尺寸	Outline dimensions	(长×宽×高)mm	10050×2520×3850	10050×2520×3850	10050×2520×3850
发动机 Engine	型号	Model		WP7.300E51	WP10.350E53	WP10.350E53
	额定功率	Rated power	kW	220	257	257
	燃料类别	Fuel		柴油 Diesel	柴油 Diesel	柴油 Diesel
	排放标准	Emission standard		国V China V	国V China V	国V China V

类别 CATEGORY	项目	ITEM	单位 UNIT	XSC3303	XSC3305	XSC3307
搅拌筒性能 Performance of mixing drum	转动速度	Rev.	r/min	0~14	0~14	0~14
	进料速度	Charging speed	m³/min	≥3	≥3	≥3
	出料速度	Discharging speed	m³/min	≥2	≥2	≥2
	出料残余率	Residual ratio of discharging	%	<0.4%	<0.4%	<0.4%
液压系统 Hydraulic system	油泵	Oil pump		国际名牌 World-famous brand		
	马达	Motor		国际名牌 World-famous brand		
	减速机	Speed reducer		国际名牌 World-famous brand		
供水 Water supply	水箱容积	Volume of water tank	L	450	450	450
整车 Overall vehicle	底盘型号	Chassis model		NXG3251D5NCX	NXG3251D5NCX	NXG3250D5NCX
	整备质量	Curb mass	Kg'	11500	11500	13400
	驱动形式	Drive type		6×4	6×4	6×4
	轴距	Wheel base	mm	3400+1350	3400+1350	3800+1350
	轮胎	Tire		11.00R20	11.00R20	11.00R20
	取力方式	PTO way		飞轮取力Flywheel		
	外形尺寸	Outline dimensions	(长×宽×高)mm	8440×2520×3720	8440×2520×3920	9160×2520×3950
发动机 Engine	型号	Model		WP7.270E51	WP7.300E51	WP10.350E53
	额定功率	Rated power	kW	199	220	257
	燃料类别	Fuel		柴油 Diesel	柴油 Diesel	柴油 Diesel
	排放标准	Emission standard		国V China V	国V China V	国V China V

重汽天然气系列 SINOTRUK GAS SERIES

类别 CATEGORY	项目	ITEM	单位 UNIT	XSL3309	XSL4313
搅拌筒性能 Performance of mixing drum	转动速度	Rev.	r/min	0~14	0~14
	进料速度	Charging speed	m³/min	≥3	≥3
	出料速度	Discharging speed	m³/min	≥2	≥2
	出料残余率	Residual ratio of discharging	%	<0.4%	<0.4%
液压系统 Hydraulic system	油泵	Oil pump		国际名牌 World-famous brand	
	马达	Motor		国际名牌 World-famous brand	
	减速机	Speed reducer		国际名牌 World-famous brand	
供水 Water supply	水箱容积	Volume of water tank	L	450	450
整车 Overall vehicle	底盘型号	Chassis model		ZZ1257N4047E1L	ZZ1317N3667E1L
	整备质量	Curb mass	Kg	15470	18870
	驱动形式	Drive type		6×4	8×4
	轴距	Wheel base	mm	4025+1350	1800+3600+1350
	轮胎	Tire		12.00R20	12.00R20
	取力方式	PTO way		飞轮取力Flywheel	
	外形尺寸	Outline dimensions	(长×宽×高)mm	9850×2500×3980	11530×2500×4000
发动机 Engine	型号	Model		T10.34-50	T12.38-50
	额定功率	Rated power	kW	250	279
	燃料类别	Fuel		天然气 Gas	天然气 Gas
	排放标准	Emission standard		国V China V	国V China V